

# Seal One® USB

## User Manual



SEAL ONE  
PUSH THE BUTTON



## **Seal One® USB**

Thank you for choosing the product Seal One® USB. In order to familiarise yourself with the device, please read this user manual carefully before using the Seal One® USB.

### **Signing transactions with Seal One® USB**

Seal One® USB combines maximum security with easy handling. Designed to digitally sign transactions based on digital signatures (e.g. as part of internet online banking), the device can simply be plugged into the USB port of your computer. Transactions, which need to be signed, are displayed directly on the Seal One® USB display.

**For your own safety, please verify the transaction shown on the Seal One® USB display before you sign it by pressing the button.**

Seal One® USB is ready with out of the box functionality (without any additional configuration or software to install). It provides comprehensive protection against any trojan, virus and phishing attacks when signing a transaction.

Seal One® USB is compatible with all major operating systems, including numerous Windows, Mac OS and Linux versions.

A full list of the supported operating systems can be found at:  
[www.seal-one.com/OS](http://www.seal-one.com/OS).

### **Using your Seal One® USB with a Seal One acceptance partner**

Where to use the Seal One® USB?

Seal One Devices can be used with any acceptance partner of Seal One AG. You can use your device with all partners with the acceptance logo:



A list of all current acceptance partners can be found on the following web page: [www.seal-one.com/partner](http://www.seal-one.com/partner)

## 1 Package includes

- **Seal One® USB**

Seal One® strives to offer products meeting customers' needs. This is achieved by using high quality materials and paying great attention to every detail.

- **USB extension cable**

Please note that the USB extension cable is designed for exclusive use with the Seal One® USB. The manufacturer assumes no liability for any use not in connection with the use of the Seal One® USB.

- **User manual**

The user manual contains all the necessary steps for installation, use and care of your Seal One® USB.

- **The package does NOT include a CD**



The package does NOT include a CD..  
The entire operating software is already included on the Seal One® USB. The software is NOT available on CD.



## 2 Operation of Seal One® USB

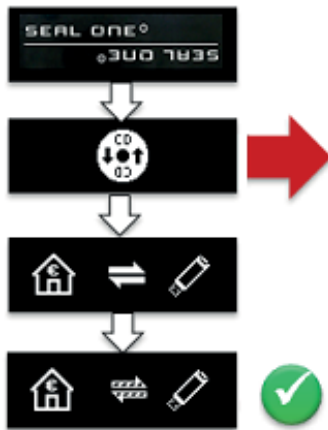
Using the Seal One® USB is easy, convenient and secure. After activation through an acceptance partner, the process is completed in 3 simple steps:

- 1. Connect:** Enter your transaction data in the partner application as usual and connect the Seal One® USB to the USB port of your laptop/PC.
- 2. Verify:** Verify the transaction data on the display of the device.
- 3. Approve:** Approve the transaction by pushing the button .

### 3 Getting started

**Step 1:** Make sure that your Laptop / PC is connected to the internet.

**Step 2:** Plug your Seal One® USB into the USB-Port of your Laptop/ PC. The device will display the following symbols one after the other as shown below:



If the CD icon remains permanently on the display (e.g., because the autostart is disabled), you must start the Seal One® USB manually.

→ see Section 3.1 ff based on the operating system you are using (Windows, Mac OS, Linux).



If the Seal One Logo or any other symbol remains on the display of the Seal One® USB (e.g. Warning or error may appear):

→ see Section 10 - Symbols and their meaning.

The first time you use a particular USB port on your laptop / PC, a welcome screen will appear

If the display appear up side down, click the „rotate display“ button. The quick start option can also be turned on and off on this screen. The settings are saved by clicking „Finish“. The Seal One® USB is ready to use.



### 3.1 Using Seal One® USB with Microsoft® Windows

Windows is a trademark of Microsoft, Inc.

If the CD icon remains on the display of the device, you need to start the application manually. Depending on local settings of your laptop / PC choose Scenario 1 or Scenario 2.

Your Seal One® USB is ready for use when the following symbol appears on the display of the device.



#### Scenario 1: Autostart is enabled on your PC

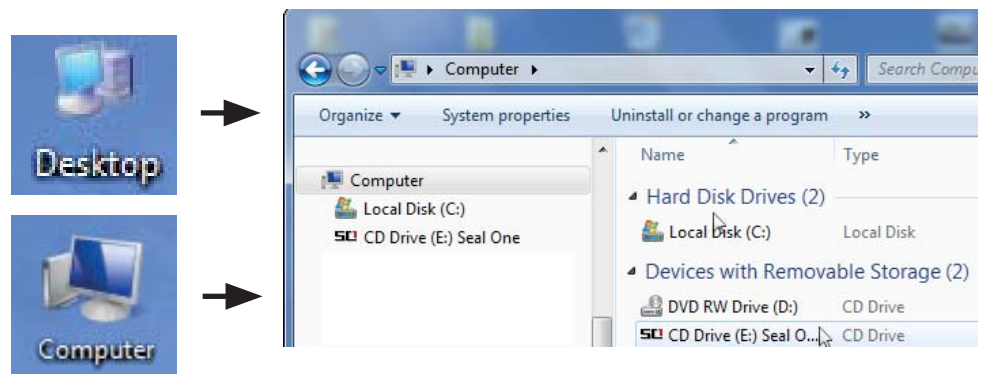
Default setting: The application starts automatically when the Seal One® USB is connected to the USB port of your Laptop / PC. The window for Autostart is shown on the right of the screen.



Start the application by clicking on „Seal One“. Further instructions are explained in Section 3, Step 2.

#### Scenario 2: Autostart is disabled on your PC

Autorun is disabled: You must start the Seal One® USB manually. Open the Start menu, select „My Computer“ or „Computer“.



Start the application by double clicking on „Seal One“. Further instructions are explained in Section 3, Step 2.

### 3.2 Using Seal One® USB with Mac OS

Mac OS is a registered trademark of Apple Computer, Inc.

After plugging the Seal One® USB to your Mac, the symbol shown on the right will appear on your desktop: „Double-click“ the CD icon.



Start the application by another „double-click“ on the Seal One program logo.



Further steps are explained in Section 3, Step 2.

### 3.3 Using Seal One® USB with Linux

Depending on the Linux distribution and configuration, the virtual CD-ROM drive of the Seal One® USB is automatically mounted. Should the virtual CD-ROM drive not automatically mount, you must perform this step manually. You can open the drive through your file manager and start the application „SealOne“. Further steps are explained in Section 3 Step 2.



To use the entire functionality of Seal One application, you need a Linux distribution which contains the GTK graphics library. The Application can also be used without a graphical interface. In this case, you must configure all the necessary settings via the command line. For further details please refer to the README.txt on the virtual CD-ROM drive on the Seal One® USB.

## 4 Activating the Seal One® at an acceptance partner

To use the Seal One® USB with our acceptance partner, you must enable the device within the application of acceptance partners in advance.




Since the activation process at the acceptance partners may differ, please follow the instructions of the acceptance partners. For questions and comments, please contact the hotline of the acceptance partner.

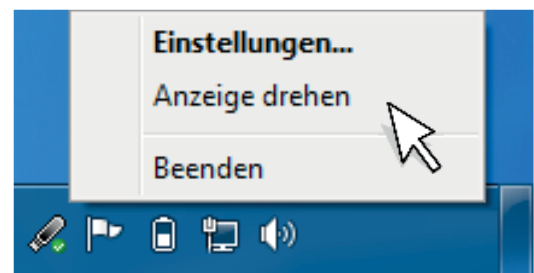
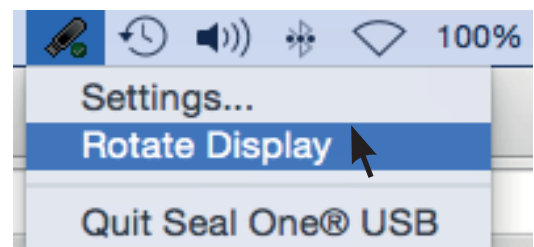
Registered Seal One® acceptance partners are identified by the acceptance logo shown above: The logo indicates that the partner application is able to work with Seal One®.


## 5 Rotate display

When the Seal One® USB is connected to the laptop / PC, an  icon appears in the taskbar notification area (see figure).

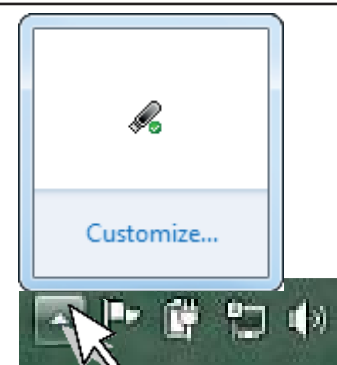
In some cases it may occur that the displayed text of the Seal One® USB is shown upside down.

You can rotate the display if you „right-click“ on the  icon in the taskbar, and select „Rotate display“.




If the  icon is not visible at the taskbar you can find it by pressing the „open area arrow“ where all the applications are displayed.

→ please refer to the screenshot on the right.



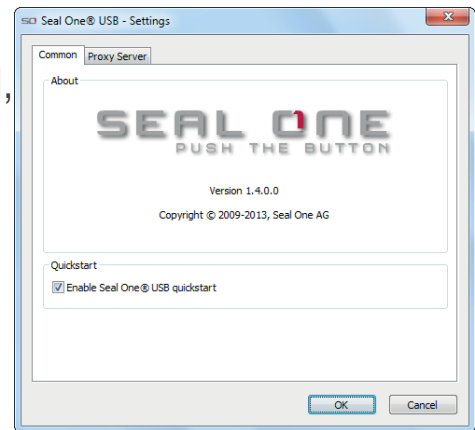
## 6 Settings

To change the settings for quick start, or the settings for the proxy server, please click on the  icon in the taskbar and select the **Settings....**

### 6.1 General

In the tab **General**, you can enable or disable the quick start option. If Quick Start is enabled, your Seal One® USB is in operational mode immediately after you start your laptop / PC (and you connect your Seal One®).

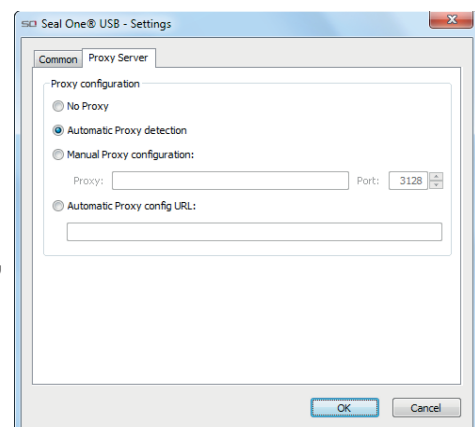
Enable or disable the quick start option, by selecting the appropriate box. Click on OK to save the settings.



### 6.2 Proxy-Server

By default, the proxy setting „Automatically detect proxy settings for this network“ is set. Under normal circumstances you will not need to change these settings. If the proxy settings for the network are not detected automatically, in exceptional cases the proxy server can also be entered manually.

For Mac OS this function is not available as it does not have this tab.



### 6.3 Firewall Settings

In some instances, the internet connection of your Seal One Unit may be blocked by your firewall.

Should this happen please allow all incoming and outgoing connections for Seal One Application.



## 7 Display of Seal One® ID

In order to use your Seal One® USB with one of our acceptance partners, you must activate it via the application of the partner. For this purpose, you usually need to add the Seal One® ID in the acceptance partner application. To display the Seal One® ID, please proceed as follows:

1. Make sure that there is no transaction displayed on the device screen and this icon is shown.



2. Press/hold the button of your Seal One® USB min. for 3 seconds until the Seal One® ID appears on the display. The Seal One® ID is shown in 3 blocks of 5 characters.

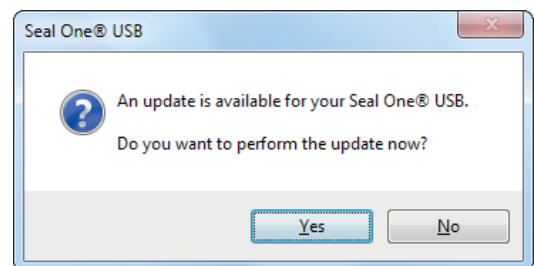


Note: To avoid error input the letters 'I', 'M', 'O', 'W' are NOT used.

## 8 Automatic Update

In order to keep your Seal One® USB up to date, you will be automatically notified when an update is available. We always recommend using the latest version and performing the updates offered.

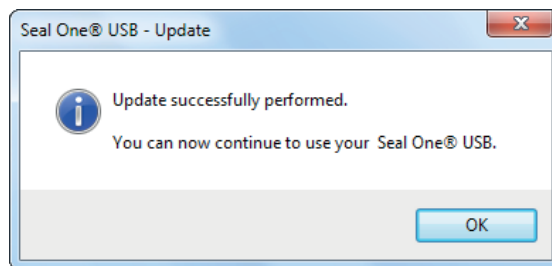
The following message on your laptop / PC is used to indicate that an update is available. Click „Yes“ to start the update.



Please note that the update process may take several minutes.

If you want to perform the update at a later point in time, click „No“. The options to update will be displayed automatically at regular intervals. During the update process the progress bar is displayed in the update window.

After a successful update, the following window will be displayed. Click „OK“ to close the window.



In case the update cannot be performed successfully, you can always repeat it again at a later point in time. In some cases it may be necessary to repeat an incomplete update manually using the restore function „Rescue\_SealOne“.

→ For step-by-step instructions please refer to Chapter 3.

## 9 Safety instructions

Please make sure that children do not have access to hardware and packaging materials. Do not let children play with the device. The device and the device cap can be swallowed by children. Never throw the device into a fire.

### 9.1 Legal disclaimer

Seal One AG disclaims all liability for damages resulting due to improper use. The Seal One® USB must not be opened. Any changes to this device are strictly prohibited and will void the warranty.

### 9.2 European Union—electronics and battery disposal information



This symbol means that according to local laws and regulations your product and its battery should be recycled separately from household waste. When this product reaches its end of life, take it to a collection point designated by local authorities for the recycling of electronic equipment. The improper disposal of waste electronic equipment from the consumer may be subject to fines.

The separate collection and recycling of your product and its battery at the time of disposal will help conserve natural resources and ensure that it is recycled in a manner that protects human health and the environment.

For any further information concerning the correct disposal of this product, please contact your local authority or the retailer where this product was purchased.

### 9.3 EC-Declaration of Conformity



Seal One AG hereby declares that this equipment is in compliance with EC the essential requirements and other relevant provisions of Directive 2004/108/EC.

The CE mark guarantees the fulfillment of the directives of the European Union.

## **9.4 Additional notes and handling instructions**

The Seal One<sup>®</sup> USB is designed and manufactured with great care and should be treated with care. The following recommendations and handling instructions should help you to ensure continuous operation and a long life expectancy:

- Connect the device to your computer or laptop only when you want to perform transactions with the device.
- Protect the device from moisture and liquids. Never attempt to paint dye the device.
- Store the device in a clean and dry place.
- Protect the device from dust and vapours.
- Never place the device near any heat sources such as radiators or ovens. Do not expose the device to high temperatures and severe temperature changes. Protect it against direct sunlight.
- Do not touch the plug contacts with sharp or metallic objects.
- Clean the device with a damp, lint-free textile. Do not use abrasive cleaners or solvents.

# RETURN FORM

To keep your return costs low, ask for the best fees for insured shipping.

Please fill out the following return form completely.  
Returns without a completed form cannot be processed, or only processed with a considerable time delay.

**Reason of return:** \_\_\_\_\_

**Sender:**

Name/Company: \_\_\_\_\_

Street / No.: \_\_\_\_\_

Zip/City: \_\_\_\_\_

Invoice No.: \_\_\_\_\_

*Enter your email / phone number for potential questions.*

E-Mail: \_\_\_\_\_









Phone no.: \_\_\_\_\_





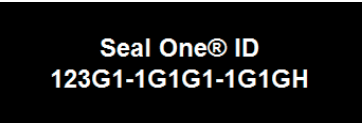



***Please use a padded envelope to ensure safe delivery and prevent loss.***

**Return address:**

**Seal One AG, Berliner Straße 44, 60311 Frankfurt am Main,  
Germany**

## 10 Symbols and their meaning

Display screen		Description
	-	<p>If during the start-up process the logo remains fixed on the display, the USB port of your Laptop/PC is disrupted or blocked.</p> <p>In this case you should try to use the device without using the USB extension cable or make use of another USB port on your Laptop/PC.</p> <p>If you are using the Seal One® USB in a company, please contact your system administrator. Seal One® USB can be activated at any time based on USB Vendor/Product ID.</p>
	-	<p>The Seal One® USB is ready. The Seal One® application has still not been started.</p> <p><i>Note: Starting the application does not require a CD. Details see Chapter 3.</i></p>
		<p>The establishment of the connection between Seal One® USB and the Internet is in process.</p> <p><i>Note: The arrows are blinking.</i></p>
		<p>Seal One® USB is connected to the Internet.</p>
		<p>There is no connection between Seal One® USB and the Internet. Please confirm your Laptop/PC is connected to the Internet.</p> <p>Maybe the Internet connection is blocked by your firewall. For details, refer to the chapter 6.3 Firewall settings</p> <p><i>Note: The warning symbol is blinking.</i></p>

Display screen		Description
		<p>You can turn the display orientation at any time. Details can be found in the user manual Chapter 5.</p>
		<p>Seal One® USB switches to energy saving mode after a few minutes, in order to increase its operating lifespan. As soon as a transaction is started, the energy saving mode is discontinued automatically and the incoming transaction is displayed.</p>
		<p>The Seal One® ID is needed for registration with a partner and appears, when you hold the button for at least 3 seconds. After successful registration, the Seal One® USB changes back to the operating mode. In case you want to discontinue displaying the Seal One® ID, without registration at a Partner, push the button for at least 3 seconds again.</p> <p><i>Note: To avoid mistakes, the letters 'I', 'O', 'M', 'W' are not used.</i></p>
		<p>This message icon indicates an internal device error. First, pull the Seal One® USB out of the USB port and then re-connect the Seal One® USB to your Laptop/PC. As an alternative you can shut down the computer and restart it.</p> <p><i>Note: If this message icon continues being displayed, regardless of any actions taken, then please contact us (address and telephone number are available on our website).</i></p>

For further enquiries (e.g. difficulties experienced due to special, individual setting of your laptop / PC), please refer to:

[www.seal-one.com/FAQ](http://www.seal-one.com/FAQ)

## Quick Start

Please make sure that you are connected to the internet.

**1**

Connect your Seal One® USB to your Laptop/PC.



**2**

A CD-Symbol will be shown on the display of your Seal One® USB.



**3**

Your Seal One® USB is ready to use.



If the „CD“ icon on the display of the Seal One® USB is permanently displayed (e.g. because auto-start is disabled), you must start the Seal One® USB manually.

→ For further details see Chapter 3 in this user manual.

Additional information and descriptions regarding the manual start of the Seal One® application can be found on our website →FAQ:

[www.seal-one.com/FAQ](http://www.seal-one.com/FAQ)

The Seal One® device works on all major operating systems; these include numerous Windows, Mac OS and Linux versions. An up-to-date list of supported operating systems is available at:

[www.seal-one.com/OS](http://www.seal-one.com/OS)

**Seal One AG**  
Berliner Straße 44,  
D - 60311 Frankfurt am Main  
[www.seal-one.com](http://www.seal-one.com)

