



1 General

To maximize its benefits, please read the user manual carefully before using.

1.1 Secure Authorization of Online Transactions with Seal One

The Seal One technology combines maximum security with effortless ease of use for the very first time. All Seal One devices are developed to authorize transactions through the use of digital signatures (e.g. as part of online / mobile banking or payments). Through a secure connection via USB to a PC with an internet connection, the Seal One 2200 presents transactions on its own display and lets you authorize them by the push of a button.

**Please pay special attention to the following security advisory:
Always carefully review the transaction data on the device's display before you authorize them by pressing the button.**

The Seal One 2200 is ready for immediate use and offers comprehensive protection against viruses, trojans, phishing attacks, and other types of malware during transaction authorization.

The Seal One devices are compatible with all major operating systems, including many versions of Microsoft® Windows, Mac OS® and Linux. For a complete, up-to-date listing of supported operating systems, see <https://www.seal-one.com/os>.

1.2 Operation of the Seal One Device

The operation of Seal One 2200 is simple, secure and convenient. After enrolling with an acceptance partner, you can authorize a transaction following these 3 steps:

- 1. Connect:** After initiating a transaction from within an acceptance partner's application, connect your Seal One 2200 to your PC via USB.
- 2. Review:** Verify the transaction data on the display of the device.
- 3. Confirm:** Authorize the transaction by pressing the **OK** button (1 second).

1.3 Buttons of Seal One 2200

Approve: The button is used for 2 functions.

1. When transaction is displayed on the device.

Meaning: Approve transaction (pressing for 1 second)

2. When the connection is established and there is no transaction.

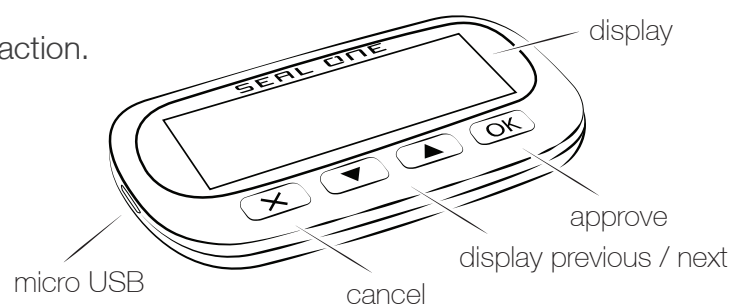
Meaning: Appear Seal One ID (hold for at least 3 seconds until Seal One ID is displayed)

Display previous / next:

Meaning: The information on the display is scrolled up or down.
(Button has no function for voice output)

Cancel:

Meaning: Cancel e.g. cancel transaction.



2 Enrollment with an Acceptance Partner

2.1 Seal One Acceptance Partner

Where can I use my Seal One device?

Seal One devices can be used in conjunction with any acceptance partner of Seal One AG. An acceptance partner will indicate its partnership with Seal One AG using the Seal One Acceptance Logo:



You can find a list of acceptance partners at: <https://www.seal-one.com/partner>

2.2 Enrolling the Seal One Device with an Acceptance Partner

The Seal One 2200 must be enrolled with an acceptance partner prior to use. Since this process may differ from one acceptance partner to another, we kindly ask you to follow the instructions outlined by the respective partner.

Please contact the customer service of the acceptance partner should any questions or concerns arise with regards to the enrollment of the Seal One device within their application.

2.3 Display of the Seal One ID

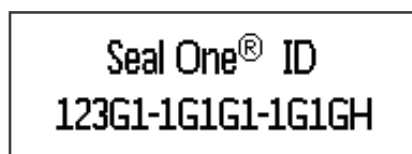
The Seal One ID is needed in order to enroll the Seal One device with an acceptance partner. To see it on the display, complete the following steps:

1. Make sure that there is no transaction displaying on the device and that you see the following:








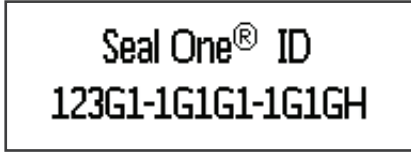

2. Press and hold the **(OK)** button on your Seal One device for at least 3 seconds until you see the Seal One ID appear on the display.

The Seal One ID is shown in 3 blocks of 5 characters as exhibited here:



N.B. The following letters are **NOT** used: I (India), M (Mike), O (Oscar), W (Whiskey).

3 Symbols and their Meaning

Display	Description
	<p>The Seal One logo is shown on startup of the Seal One device. If the logo remains permanently on the display during startup, the USB port on your PC is most likely blocked or malfunctioning. In this case, please use the supplied Micro-USB cable and / or another USB port on your PC. If the problem persists and you are using a company PC, please contact your System Administrator (the Seal One device might have to be specifically unlocked based on USB Vendor / Product ID).</p>
	<p>The Seal One 2200 has established a USB connection to the PC, but the Seal One companion application has not yet been started. N.B. No CD is required to start the application. For more information, please see section 4.1.1</p>
	<p>The connection between Seal One 2200 and the internet is being established. N.B. The arrows are flashing.</p>
	<p>The Seal One 2200 is connected to the internet and ready to use. N.B. The dots on the arrows are running in opposite directions.</p>
	<p>There is no connection between the Seal One 2200 and the internet. Please check if you have an active connection to the internet. Maybe the internet connection is blocked by a firewall. Allow all incoming and outgoing Seal One connections. Note: The warning sign is flashing.</p>
	<p>The Seal One ID is needed to enroll with an acceptance partner. It will show when you press and hold the authorize button for at least 3 seconds. As soon as your Seal One device is successfully registered, it changes to the mode „ready to use“. Note: In case you want to discontinue displaying the Seal One ID without enrolling with a partner, push the button for at least 3 seconds once more.</p>
	<p>The Seal One 2200 device turns off after a few minutes of continued inactivity. If a transaction arrives while the device is in this state, the power saving mode is automatically terminated and the transaction data is shown.</p>

For more information visit: <https://www.seal-one.com/service>

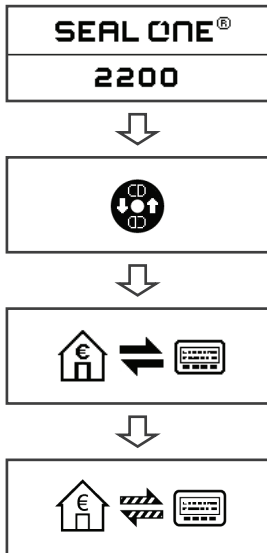
4 Seal One Usage

4.1 Seal One 2200 with Windows

Step 1: Make sure that your PC is connected to the internet.

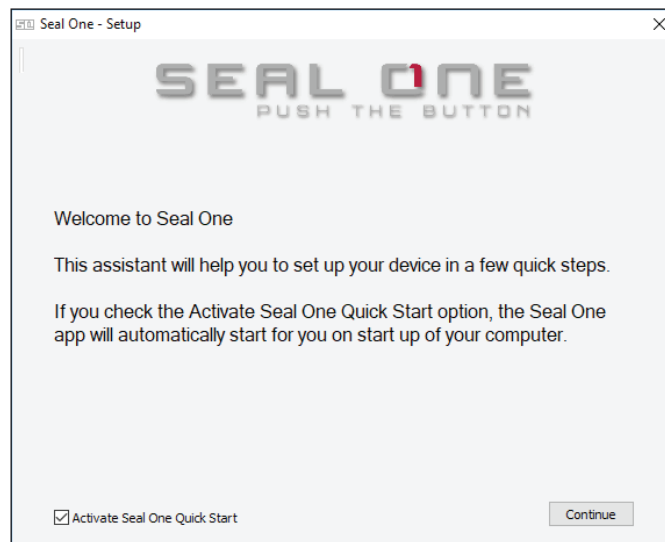
Step 2: Connect the Seal One 2200 to an available USB port on your PC and start the application on the virtual CD drive (no CD is needed).

The device will display the following symbols one after another as shown below:



If the CD icon continues to show (e.g. because auto start is disabled), you need to start the Seal One application manually. Refer to section 4.1.1 for more information.

A setup wizard will appear on application startup when no known devices are detected.



Once you have successfully established a connection to your PC, you will be directed to a screen informing you that your Seal One is ready for use. The following symbols will appear on the display of your Seal One device.

N.B. The dots on the arrows are moving.

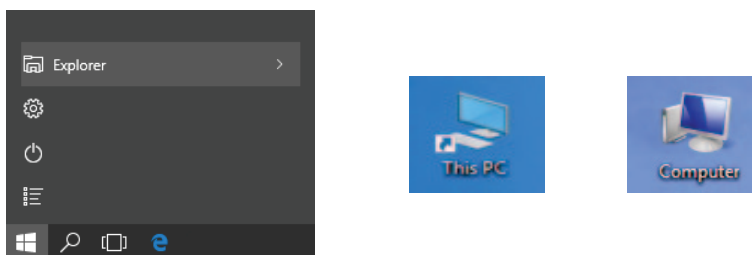


4.1.1 The CD Symbol remains permanently on the Display of the Seal One

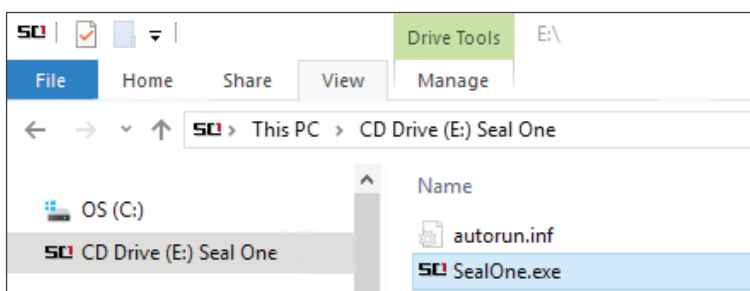
By default, the application launches directly from the Seal One device when you connect it to your PC via USB. When the application does not start automatically after connecting via USB (e.g. auto start is disabled), you must start the application manually.




Open “This Computer” on your desktop or in the start menu, option “Explorer”



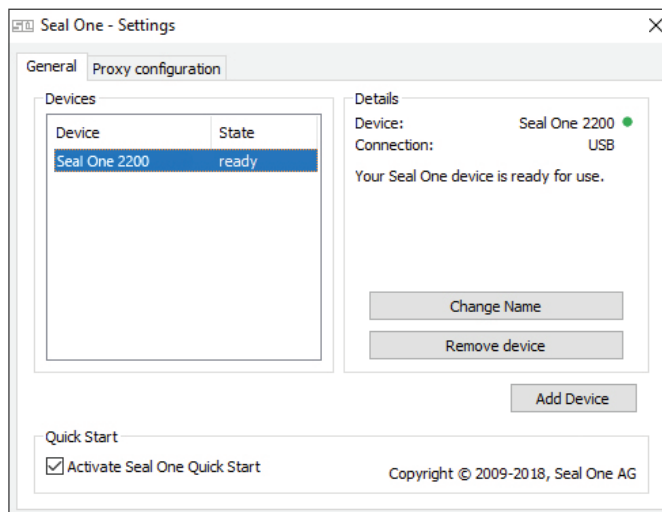
The Seal One 2200 is mounted as a virtual CD-ROM. Start the program by double clicking the application icon labeled “SealOne”.



4.1.2 Settings


The settings for your Seal One device are managed under the “Settings” menu option (click the  tray icon to display the full menu).

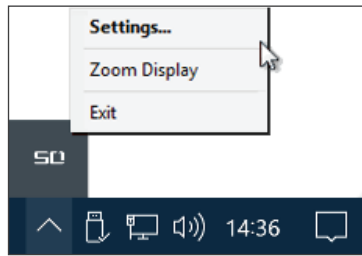
N.B. It is possible that the Seal One tray icon is hidden until you click the Up arrow to show all tray icons.



Available settings include changing the device’s name, adding / removing devices, and enabling Quick Start.

4.1.3 Zoom Display

If the default font size of the displayed data on the Seal One device's screen is too small for you, you have the option to enlarge the font size. You can enable / disable display zoom via the "Zoom Display" menu option of the  tray icon.

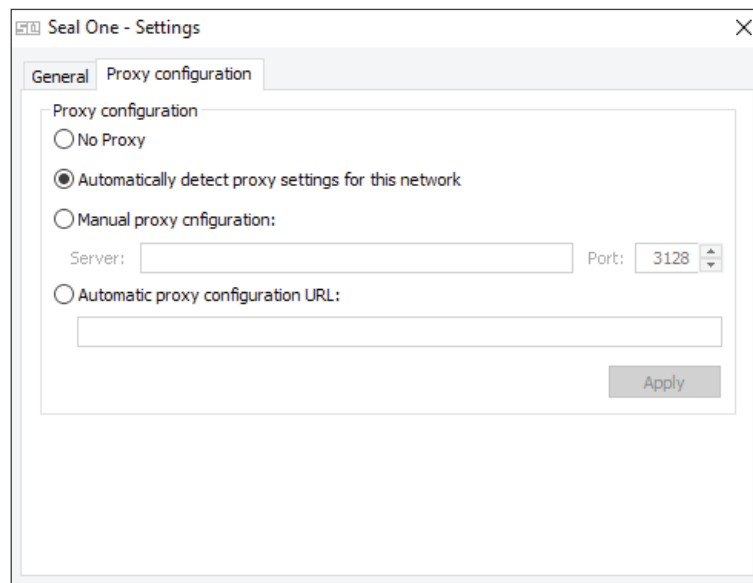


When lines are larger than the screen size are displayed, the text will be displayed as a horizontally scrolling ticker.

4.1.4 Proxy-Server

By default, the proxy setting is "Automatically detect proxy settings for this network". Normally, you should not need to change this setting. In exceptional cases, you may manually configure the proxy settings here.

If you have any questions with regards to proxy settings, contact your system administrator.

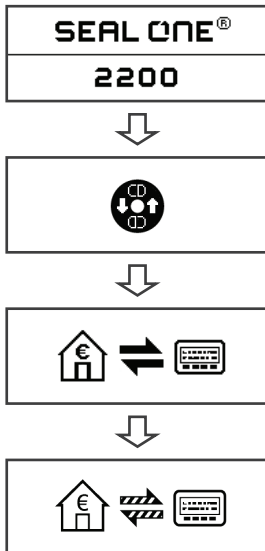


4.2 Seal One 2200 with Mac OS

Step 1: Make sure that your Mac is connected to the internet.

Step 2: Connect the Seal One 2200 to an available USB port on your Mac and start the application on the virtual CD drive (no CD is needed).

The device will display the following symbols one after another as shown below:



If the CD icon continues to show (e.g. because auto start is disabled), you need to start the Seal One application manually. Refer to section 4.2.1 for more information.

A setup wizard will appear on application startup when no known devices are detected.



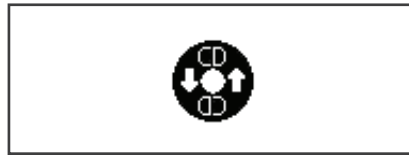
Once you have successfully established a connection to your Mac via USB, you will be directed to a screen informing you that your Seal One is ready for use. The following message will appear on the display of your Seal One device.

Note: The dots on the arrows are moving.

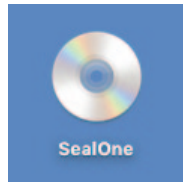


4.2.1 The CD Symbol remains permanently on the Display of the Seal One

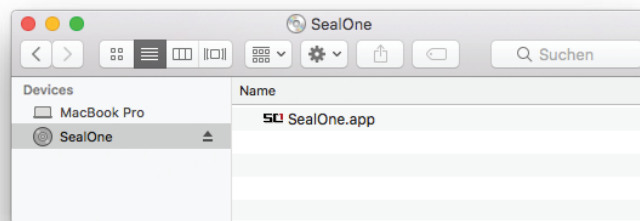
The CD symbol will appear and persist on the display of your Seal One if the Seal One application is not currently running. In this case, you will need to manually start the application.



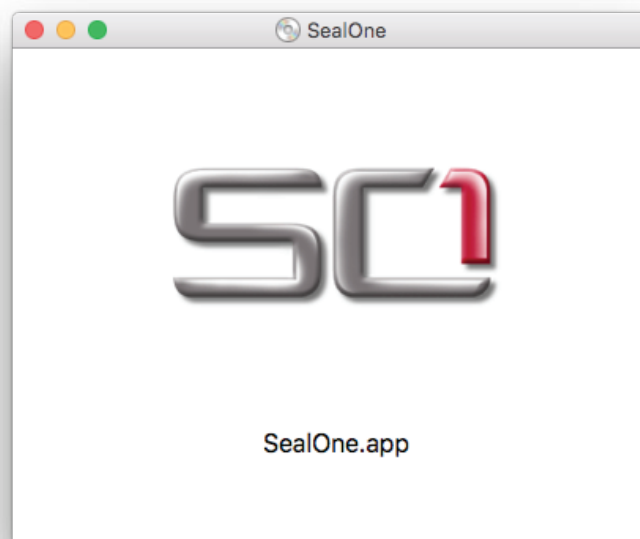
Open the Seal One application by double-clicking the Seal One CD icon on your Desktop.




Alternatively, you can use the "Finder" application to find a mounted virtual CD-ROM drive and start the application there.

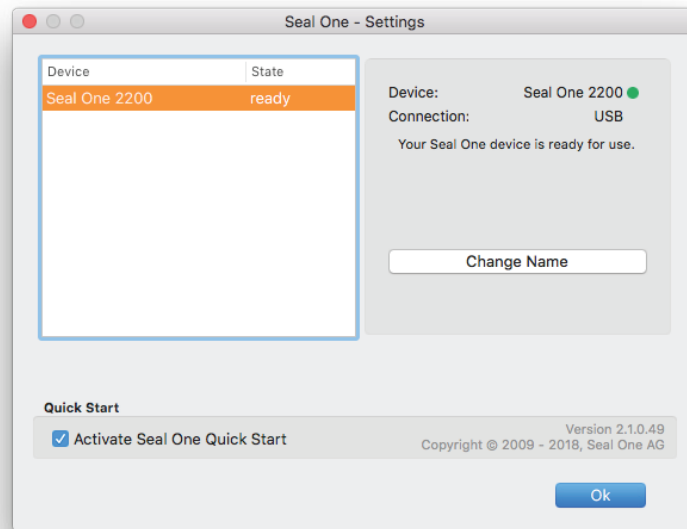
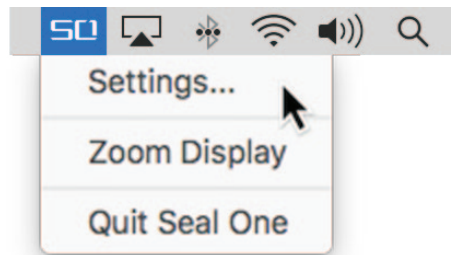


Start the Seal One application with another double-click on the Seal One application icon.



4.2.2 Settings - Mac OS

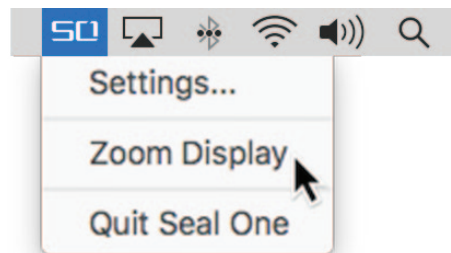
The settings for your Seal One device are managed under the “Settings” dropdown menu option (click the  icon in the Menu Bar to display the full menu).



Available settings include changing the device's name, adding / removing devices, and enabling Quickstart.

4.2.3 Zoom Display

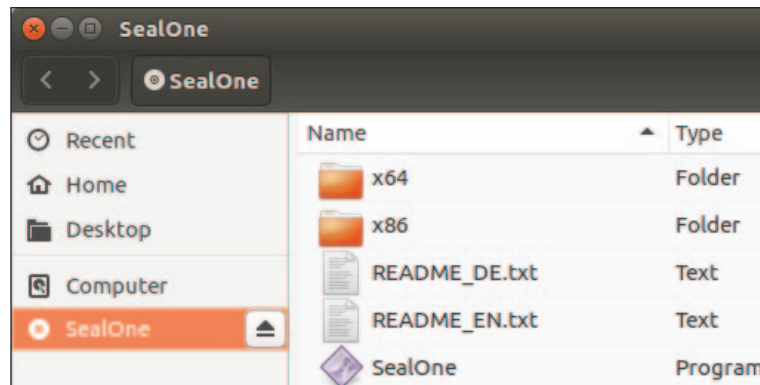
If the default font size of the display data on the Seal One device's screen is too small for you, you have the option to enlarge the font size. You can enable / disable display zoom via the “Zoom Display” dropdown menu option of the Seal One menu bar icon.



When lines are larger than the screen size are displayed, the text will be displayed as a horizontally scrolling ticker.

4.3 Seal One 2200 with Linux

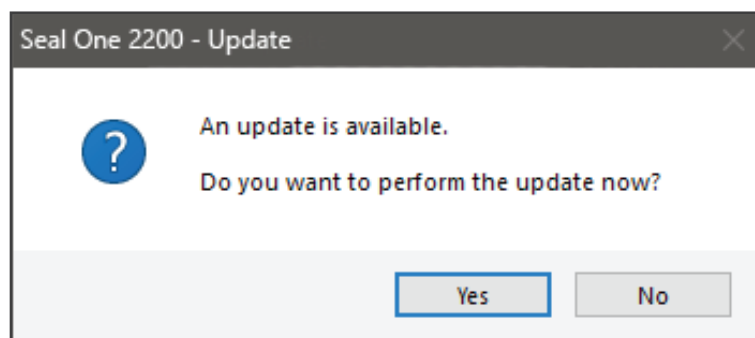
Depending on the Linux distribution and configuration, the Seal One CD drive will automatically mount itself. When that's not the case, you must do this step manually. Once done, you can find the drive from your File Manager and start the Seal One application by double clicking on it.



In order to have a full featured experience on Linux, you will need a Linux Distribution which contains the GTK graphics library. You can also use the application without a Graphical User Interface, in which case you would need to manage the necessary settings for your Seal One device via the command line. For more details, see the README.txt on the virtual CD ROM drive.

5. Automatic Updates

To keep your Seal One 2200 up-to-date, you will be notified of any available firmware updates. We recommend that you always update to the latest version when prompted. When an update is available, you will be presented with the following dialog asking if you would like to update now.



During the update process, you will see a progress bar displayed in the update window and on the device's display.

Please take special care not to disconnect your device from USB during the update process. After a successful update, your Seal One will automatically restart, reconnect, and be ready for use.

If you would prefer to defer the update to a later date, click "No" when in the dialog. The update prompt will be displayed again in regular intervals.

6. Handling and safety Instructions

CAUTION: Failure to observe the following safety guidelines may under certain circumstances result in fire, electrical shock, other injury or damage to the Seal One unit or other components. Please ensure that children do not have any access to the hardware and packaging materials. Never let children play with the device. Children can swallow the device and the accessories. The device is designed and manufactured with great care and should be treated with care.

The following recommendations and operating instructions should help you to ensure a longlasting operation:

- Avoid dropping the device and never open it.
- Protect against direct sunlight, high temperatures and severe temperature changes, this could damage movable and electronic components and the functionality is no longer guaranteed.
- Never throw the device in a fire.
- The housing of the device can break through substantial impact.
- The use of the device once it has been damaged is prohibited.
- Use the device at a clean and dry place.
- Protect the device from dust and vapors.
- Protect the device from humidity and liquids, and never put paint on it.
- To clean, use slightly damp, lint-free cloth and do not use harsh cleaners or solvents.

6.1 Legal Disclaimer

Seal One AG disclaims all liability for damages resulting due to improper use. Opening the Seal One 2200 and any changes on the device are strictly prohibited and will void the warranty.

6.2 Disposal of old electrical and electronic Equipment



This symbol indicates that according to local laws and regulations your product and its rechargeable battery must be recycled separately from household waste. When this product reaches its end of life, take it to a collection point designated by local authorities for the recycling of electronic equipment.

The improper disposal of waste electronic equipment by the consumer may be subject to fines. The separate collection and recycling of your product and its battery at the time of disposal will help conserve natural resources and ensure that it is recycled in a manner that protects human health and the environment. The device and its battery should be handed over to the appropriate collection point for the recycling.

6.3 EC-Declaration of Conformity



Simplified EU Declaration of Conformity

Seal One AG hereby declares that the Seal One 2200 conforms to the EU directives, harmonized standards, and technical specifications for this device. The full text of the EU Declaration of Conformity is available at the following Internet address: www.seal-one.com/conformity

7. Return form

Please use a sturdy packaging for return, such as a padded envelope or shipping bag. For the return form, return address, and further information, please visit:

<https://www.seal-one.com/return>

8. Package Contents

- **Seal One 2200**

Seal One strives to offer products meeting customers' needs. This is achieved by using high quality materials and paying great attention to every detail.

- **Micro-USB cable**

Please note that the Micro-USB cable is designed for exclusive use with Seal One 2200. The manufacturer assumes no liability for any use not in connection with Seal One devices. You can also use a standard Micro-USB cable with the Seal One 2200.

N.B. **Don't** use a Micro-USB **charging cable**.

- **User manual**

This user manual contains all necessary steps for installation, usage and maintenance of your Seal One 2200.

- **The package does NOT include a CD**



The package does NOT include a CD.
The entire operating software is already included on the Seal One.
The software is NOT available on a CD.





Seal One AG
Berliner Straße 44
60311 Frankfurt am Main
www.seal-one.com

Mac OS is a registered trademark of Apple Inc.
Microsoft is a registered trademark of Microsoft Inc.
Seal One is a registered trademark of Seal One AG.



Seal One® – Patented Technology